

STOP THEM INVADE!

SPOTTED LANTERNFLY



ACTUAL SIZE: 1"
Adult (with wings closed) can be found July–December



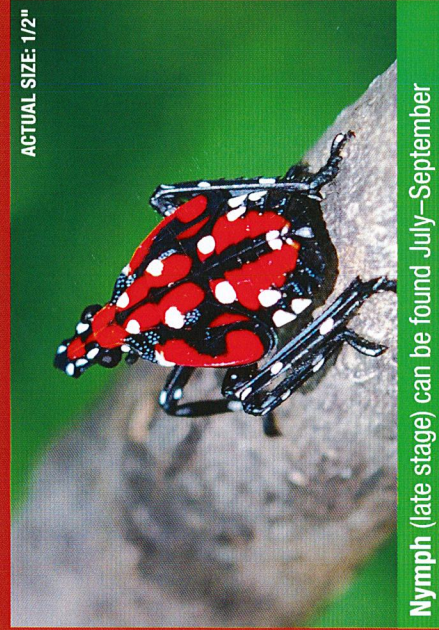
ACTUAL SIZE: 1/4"
Nymph (early stage) can be found late April–July



Egg mass (fresh) can be found October–December



ACTUAL SIZE: 1"
Adult (with wings open) can be found July–December



ACTUAL SIZE: 1/2"
Nymph (late stage) can be found July–September



Egg mass (older) can be found January–June

THIS INVASIVE INSECT POSES A SIGNIFICANT THREAT to Pennsylvania agriculture, including the grape, tree fruit, hardwood, and nursery industries, which are collectively worth nearly \$18 billion to the state's economy.

REPORT spotted lanternfly sightings at extension.psu.edu/spotted-lanternfly.

DESTROY all life stages that you find. Check your car and outdoor equipment before traveling.

SHARE your knowledge with others!

For more information, visit extension.psu.edu/spotted-lanternfly or call 1-888-4BAD-FLY (1-888-422-3359).



PennState Extension



pennsylvania
DEPARTMENT OF AGRICULTURE



This publication is available in alternative media on request.

Penn State is an equal opportunity, affirmative action employer, and is committed to providing employment opportunities to all qualified applicants without regard to race, color, religion, age, sex, sexual orientation, gender identity, national origin, disability, or protected veteran status.

Produced by Ag Communications and Marketing U.Ed. AGR 19-13 Code EE0231 2MB/18mpc